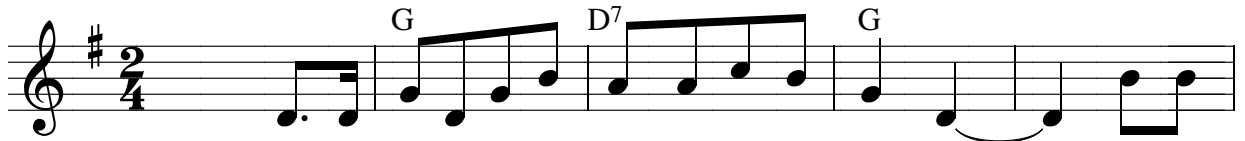


Aleluia, batei palmas

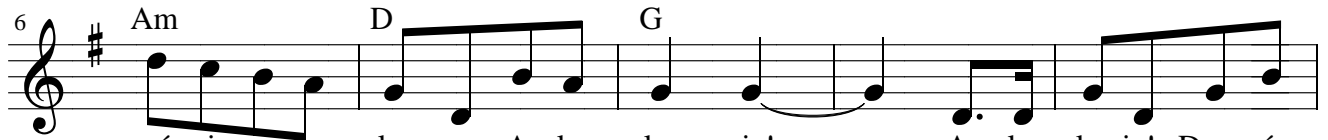
Abertura - Dom. Ascensão do Senhor

SI 47(46) - Versão: J. Rodrigues

M.: Ronoaldo Pelaquim



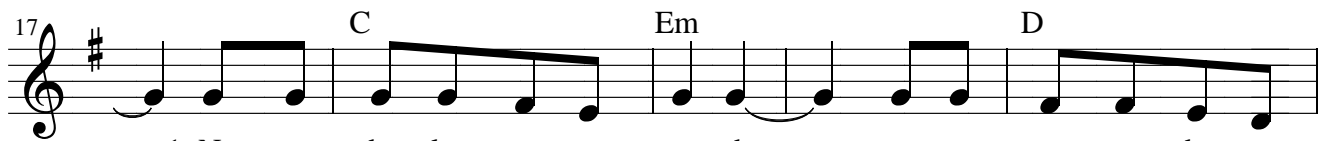
A - le - lu-ia! Ba-tei pal-mas, po-vos to - dos! Can-tai



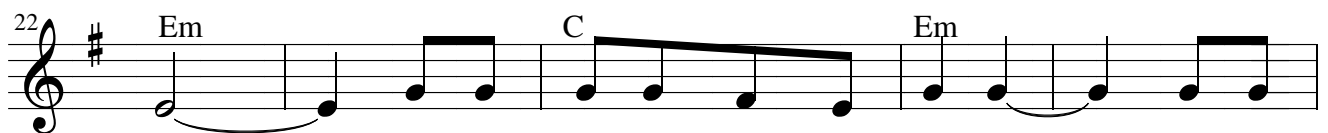
mú-si-cas a - le-gres, A - le - lu - ia! A - le - lu-ia! Deus é



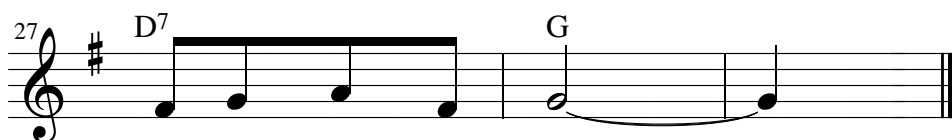
gran-de_e po-de- ro - so, pois go- ver-na_o mun-do_in- tei-ro, a - le - lu - ia!



1. Nos man - dou le - var a to - dos a men - sa - gem do a -
2. O Se - nhor é ven - ce - dor, tri - un - fan - te so - bre
3. Deus do - mi - na_o mun-do_in-tei - ro, as - sen - ta - do no seu



1. mor. E - le fez u - ma_A - li - an - ça com o
2. céu. E - le_é Rei de to - da ter - ra, can- tai
3. trono. Re- u - niu os po - vos to - dos: to - dos



1. po - vo, que_es- co - lheu!
2. hi - nos de vi - tória
3. são po - vo de Deus!